

Tenements

- [Background to HPQ](#)
- [JORC Report](#)

Project Ownership & Location

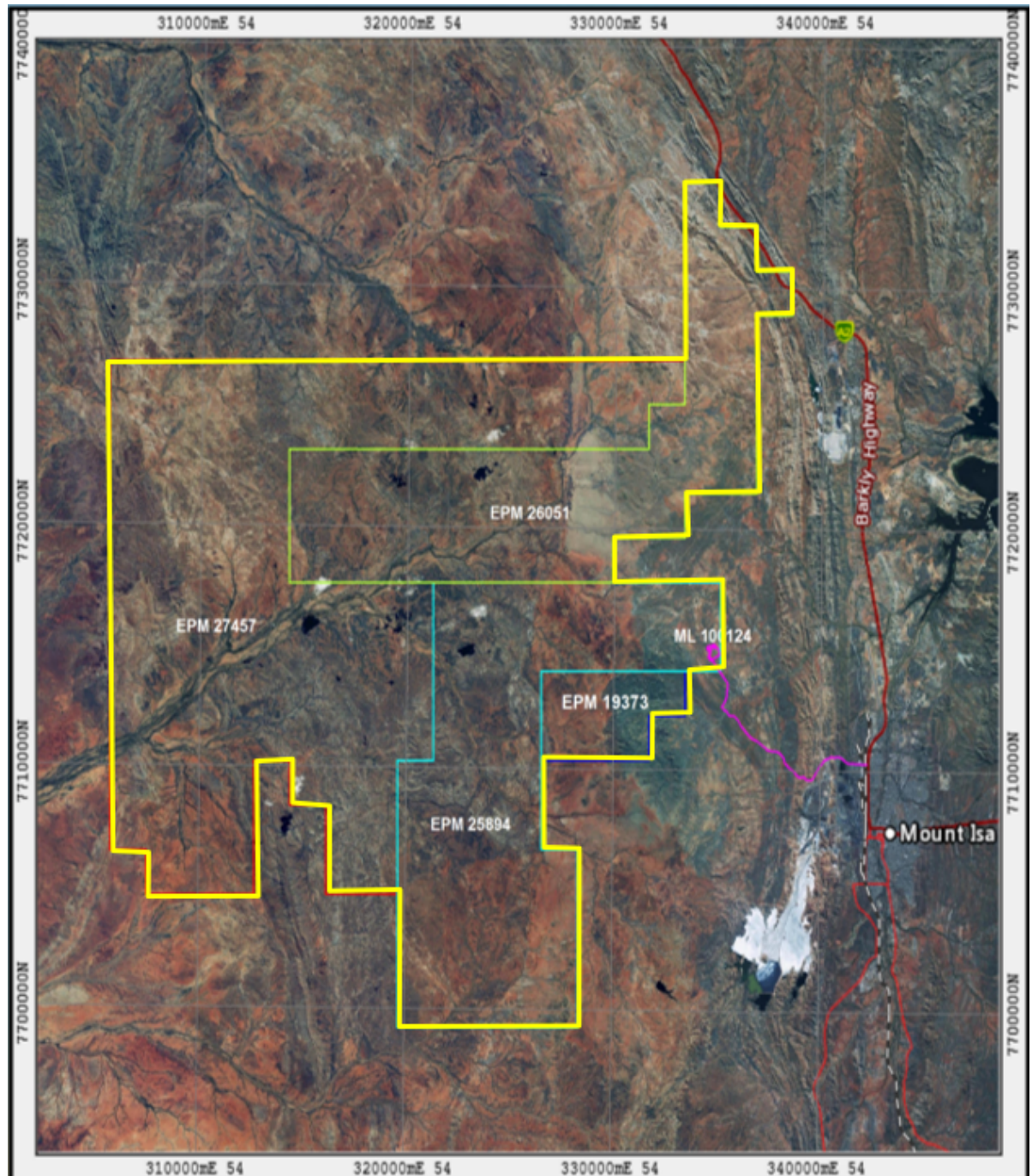
Greentech and its 100% owned subsidiary Millungera Energy Minerals Pty Ltd (MEM) hold five granted tenements comprising one Mining Lease (ML 100124) and four Exploration Permits for Minerals (EPM 19373, EPM 25894, EPM 26051, and EPM 27457) with a total area of 651km², centred approximately 25 km west-northwest of Mount Isa in northwest Queensland. The Tenements are prospective for quartz mineralisation amenable to the production of HPQ and for other commodities including copper, gold, cobalt, vanadium and phosphate. Both EPM 19373 and EPM 25894 were originally granted to parties other than Greentech. EPM 19373 was transferred to Greentech in September 2017 as part of a joint venture agreement with Nova Strategic Minerals Pty Ltd (Nova). In October 2016, Greentech acquired 100% of MEM, which held EPM 25894. EPM 26051, EPM 27457, and ML 100124; and these tenements (with the exception of EPM 25894 which is still held by MEM) were granted directly to Greentech. ML 100124 is granted for the purpose of mining quartz/quartzite/silica and each of the four EPMs are granted for exploration of all minerals other than coal.

In January 2018, MEM entered into a Farm-In Agreement with Multiminnes Pty Ltd (Multiminnes) in which Multiminnes could earn a 20% interest in EPM 25894 for all minerals other than quartz through

a minimum expenditure of AUD \$65,000 and a maximum expenditure of AUD \$100,000 within six months of the start of the agreement. Multiminnes met this expenditure requirement and now

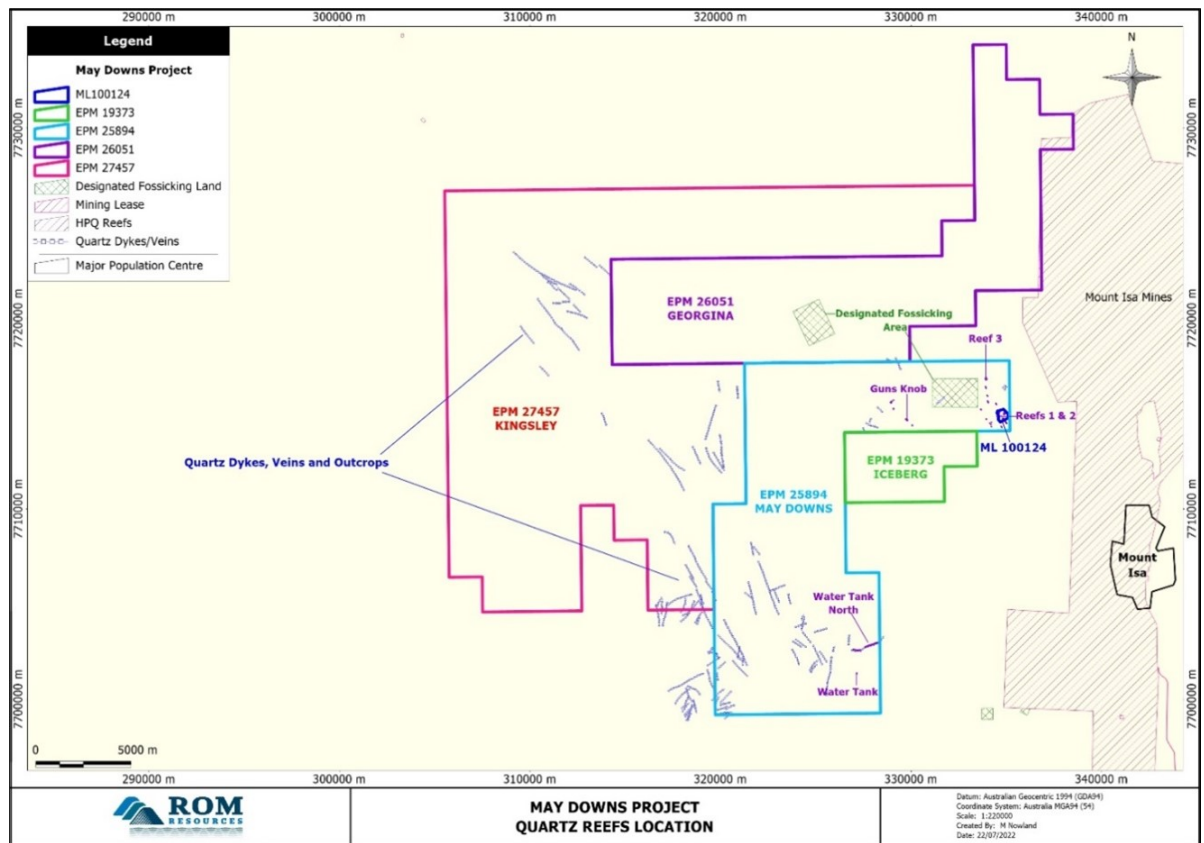
holds a 20% interest in EPM 25894 for minerals other than quartz. Future exploration for minerals other than quartz on EPM 25894 will be funded pro rata by each party.

The following maps show the location of Greentech Tenements and granted Mining Lease Area



_hQ1W3es28xcBs

[Click to Enlarge](#)



D1hKqP8D28eFaD

[Click to Enlarge](#)

Resource

The following table is an extract from the Prospectus;

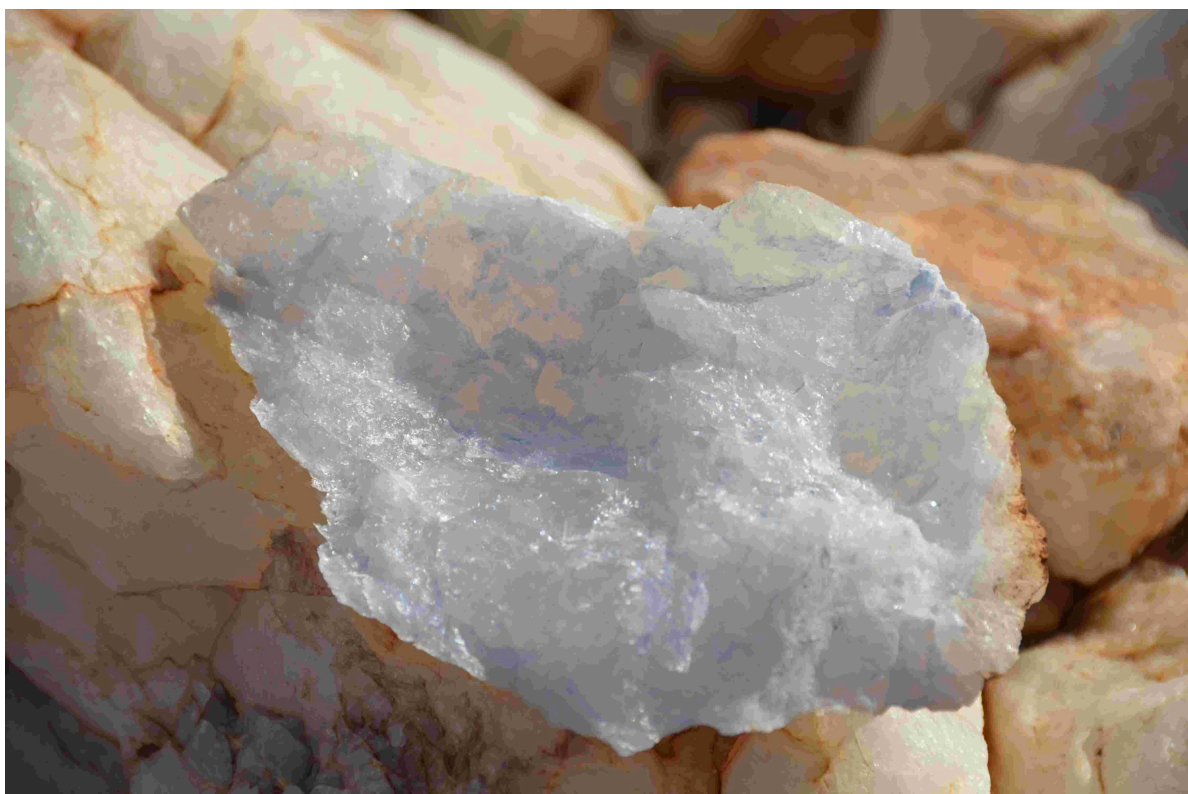
Table 3.1. HPQ Resource Estimates of reefs from ROM (2022); after IGR Table 8-2 (Derisk, 2022, p.33).

Prospect	Tenement	Measured (kt)	Indicated (kt)	Inferred (kt)	Total (kt)	SiO ₂ (%)
Reef 1	ML 100124	5	1	3	10	99.93
Reef 1A	ML 100124	-	<1	<1	1	99.96
Reef 2	ML 100124	9	4	5	19	99.96
Reef 3	EPM 25894	20	19	12	51	99.95
Reef 3A	EPM 25894	-	7	5	12	99.95
Reef 4	EPM 25894	-	3	2	4	99.96
Reef 6	EPM 25894		<1	<1	1	99.96
Guns Knob	EPM 25894	38	78	6	121	99.96
Reef_WT	EPM 25894	-	<1	2	2	99.96
Reef_WT_N1	EPM 25894	-	12	30	42	99.96
Reef_WT_N2	EPM 25894	-	36	89	124	99.96
TOTAL		72	161	155	388	99.96

Note:

1. Competent Person for estimation and reporting – Mark Biggs
2. Derisk has rounded resource sub-totals to reflect the accuracy of estimates, and this may lead to rounding errors.

May Downs ML



Maydowns_7



Maydowns - 2



Maydowns - 5



Iceberg-2



Iceberg Phase 2 Shipment_5

Surrounding Geology



7BCTdjDsupbo20

[Click to Enlarge](#)



s0VTuKFVu3zWK2

[Click to Enlarge](#)



-xCuYVzV9JeKt0

[Click to Enlarge](#)

Quality



1LCTV5p9oYkZXt

[Click to Enlarge](#)



p4Bg3K6dQrcHRD

[Click to Enlarge](#)